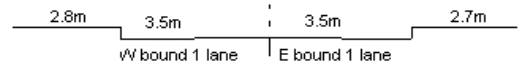
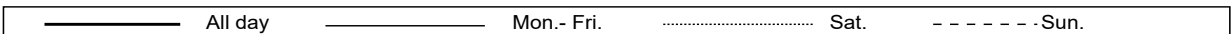
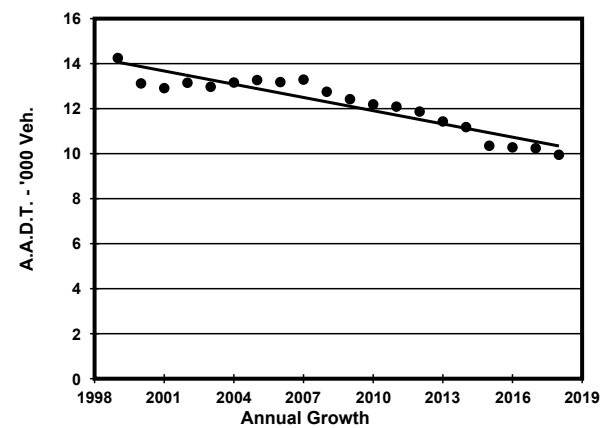
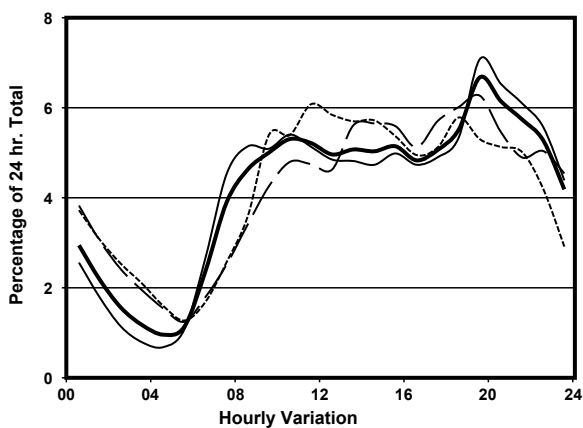
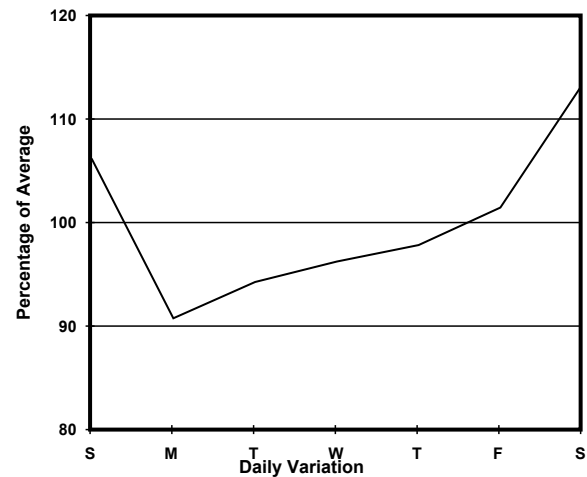
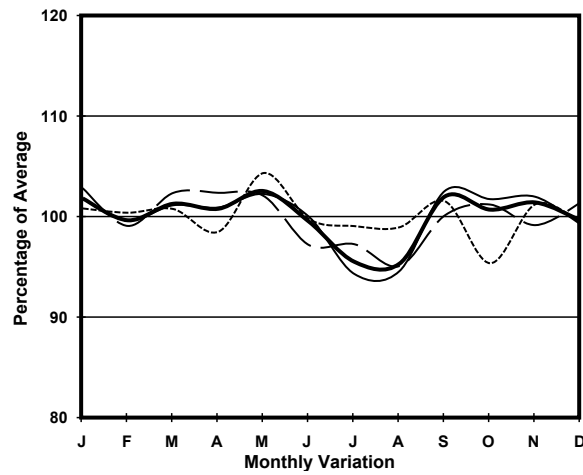


YEAR	2018	LINK	CAINE RD (from SEYMOUR RD to ABERDEEN ST)
CORE STATION	1013		
ROAD NETWORK	MAJOR		
ROAD TYPE	DISTRICT DISTRIBUTOR		



1. TRAFFIC FLOW VARIATION AND GROWTH



2. TRAFFIC CHARACTERISTICS (BY DIRECTION)

Parameter	All - Day	Mon. - Fri.	Sat.	Sun.
EAST BOUND				
A.A.D.T.	7340	7290	8000	6770
R 12 / 24 - %	63.7	65	60.2	60.6
R 16 / 24 - %	84.2	86.1	79.6	79.1
AM Peak Hour	0900-1000	0900-1000	0900-1000	0900-1000
One-way flow at AM peak hour	410	420	410	330
T - % (AM)	-	-	-	-
PM Peak Hour	1800-1900	1800-1900	1800-1900	1800-1900
One-way flow at PM peak hour	430	430	450	400
T - % (PM)	-	-	-	-
Prop.of commercial vehicles - 16 hr.	-	-	-	-
WEST BOUND				
A.A.D.T.	2610	2240	3230	3750
R 12 / 24 - %	48.5	42.3	52.8	63.2
R 16 / 24 - %	81.7	81.1	79.9	84.9
AM Peak Hour	0900-1000	0700-0800	0700-0800	0900-1000
One-way flow at AM peak hour	90	90	70	240
T - % (AM)	-	-	-	-
PM Peak Hour	1600-1700	1600-1700	1800-1900	1800-1900
One-way flow at PM peak hour	120	90	230	210
T - % (PM)	-	-	-	-
Prop.of commercial vehicles - 16 hr.	-	-	-	-

3. OTHER INFORMATION AND COMMENT